

December 2019 / Kislev — Tevet 5780

Volume 30, Issue 11

Chag Sameach! **Hanukkah Happenings**



Something for everyone! Below are three different Hanukkah celebrations happening this month:

Hanukkah Celebration and Religious School Reunion!

We are inviting TBO Religious School alumni born in or before 1995 for a wine and cheese hour prior to services on **Friday, December 27, at 6:00 pm** on the lower level at TBO! For more information, please contact Debbie Halliday.

Evening Shabbat and Hanukkah Service

Join Rabbi Kort and music leader Debbie Massarano for a celebration of Shabbat and Hanukkah on **Friday, December 27, 7:30pm**.

1st Chapter *Chavurah* December Event

1st Chapter members are invited to a family Hanukkah potluck party on Saturday, **December 28, 6:00-8:00 pm** at TBO. The potluck sign up link will be in our Facebook group event and meet-up app.

RSVP is required to attend. Please do so by Dec 21. RSVP either on Facebook, the meet-up app or to Michelle Douglass. Please bring your favorite *hanukkiah* and candles so we can all light them and say the prayers together.

General Membership Meeting

Saturday, December 7 at 4:30 pm

Please join the Temple Beth Or Governing Board on December 7 for our semi-annual General Membership Meeting. We will begin with light snacks and *Havdalah*. At the meeting we will be electing new Board members, hearing about the many happenings of this past year, our annual parking space auction, and some updates from committees. "Meet" the slate of candidates and see more information about this important meeting on pages 3, 7, 8, and 9.

Please note: This is official membership notice of the General Membership Meeting.



House of Light

3215 Lombard Ave, Everett, WA 98201

425.259.7125

Founded 1985
TempleBethOr.org



Our Rabbi

K'hilah/

Mishpachah

Torah

Avodah

Tzedakah/

Tikkun Olam

Leadership

Tzedakah:

The Perfect Hanukkah Gift



The origins of Hanukkah gift giving stem from the holiday's association with learning. Hanukkah means dedication in Hebrew, referencing the rededication of the Temple in Jerusalem by the Maccabees. Hanukkah is related to the word *chinuch* which means education.

Perhaps referencing the Hanukkah-education connection, Jewish families in Medieval Europe took on a practice of giving gelt (money in Yiddish) as a gift to their children's teachers at Hanukkah time. Before these coins morphed into the chocolate gelt we know today, it became a tradition among the Jews of Europe to give coins to children as a Hanukkah gift.

These coins were not simply used to purchase toys and candy. Parents gave gelt as an educational tool to teach the mitzvah of *tzedakah*, charitable giving. Kids were encouraged to donate some of their gelt to help those in need.

The origins of Hanukkah gelt show that Hanukkah is an organic time to dedicate some of our personal funds

to *tzedakah*. There are beautiful ways to incorporate *tzedakah* into creative holiday gifts. Instead of purchasing small gifts as tokens of gratitude to coworkers, teachers, friends, and family, think about making a donation in their honor to a charitable organization. As part of her Hanukkah gift giving, my mom likes to give my daughter, Galit, and her cousins an opportunity to pick an animal for a family in the developing world through Heifer International. Last year, all three girls created a *tzedakah* collective and pooled their money to donate two goats! I can't wait for you to tell me the creative ways you incorporate *tzedakah* into your life this special time of year.

Wishing you and yours *Chag Urim Sameach*, Happy Festival of Lights!

L'shalom,
Rabbi Rachel Kort

Rabbi Kort invites you to call upon her for help, support, or just to talk.

Office Hours: Please contact Rabbi Kort directly to make an appointment. She is typically available to meet in Everett on Wednesdays and the Fridays when she is leading Shabbat Services.

Phone: 425-954-1223; Email: RabbiKort@TempleBethOr.org

Rabbi Kort's sermons and writings can be found on the TBO website under "About Us/Rabbi."



If Not Now, When?

I prevailed upon the *ORacle* editor to give me a page in this month's edition of the *ORacle*. Why this month? My reasons are two-fold: to tell you about some of the happenings of the year and to **urge you to come to the General Membership Meeting on December 7, beginning at 4:30 pm.**

First and foremost, this is the meeting where we do one of our most important tasks — electing our new Board members for the coming year and, for some, beyond. I am grateful to the Nominating Committee, led by Sonia Siegel Vexler, for presenting us with such a qualified slate of candidates. Please see pages 8 and 9 to “meet” our nominees. Let us show these people our support and honor their commitment by joining in to vote on the slate, welcoming them to the Board, and thanking them for stepping into these positions. In addition to this new blood coming on the Board, we have the balance of strong returning Board members. I am looking forward to working with next year's Board.

Second, it has been quite a year! One of change, challenges, and successes. Below are some of these, not in any particular order.

In my first few weeks of presidency, our office maven of 15 years announced her retirement. While we will miss Terri's smiling face, we are so fortunate to have hired Sarah Davis. She brings to our office wealth of experiences, great skills, energy, and most importantly, a lovely personality to our office.

After several years hiatus, the *ORacle* came back. I hope members feel more connected, having this addition to our communication sources. Next year we will formally ask you if this publication is of value and should be continued. Please respond to the survey when it arrives.

Thanks to the excellent work of James and JonaRose Feinberg, the Temple submitted a grant proposal for funds to increase our property's security. We were awarded a grant to provide fencing of the property to increase security and safety of the campus. More about that in the months to come. We have also instituted and will be looking at other security measures this coming year.

Our dynamic and growing Religious School now has a comprehensive emergency plan! While we have always had conscientious staff at school, we have codified plans in the event of an unforeseen emergency. Thanks to Amy Paquette for working on this important project.

As everyone has surely noticed, our duplex has burned beyond repair. As of this writing, we are in discussion with the insurance company regarding removal of the building. Our Strategic Planning Committee will be soliciting everyone's input on where we should go from here. There are several options, all with different financial considerations. Your input will help determine our direction for several years to come.

We have begun the process as committees and the Board, of looking at our policies and reaffirming, modifying, or deleting them as appropriate. I am impressed with the amount of thought our leadership is giving to these.

Now is the time when it is most important for all our members to “be present.” Come to the meeting and hear from some very dedicated people. Let us know your thoughts. We need to hear them in order to be the best stewards of our Temple.

L'shalom,
Vicky

Our Rabbi
K'hilah/
Mishpachah
Torah
Avodah
Tzedakah/
Tikkun Olam
Leadership

Our Rabbi

*K'hilah/
Mishpachah*

Torah

Avodah

*Tzedakah/
Tikkun Olam*

Leadership

**The First
Chapter— Temple
Beth Or's
New Chavurah
for Families with
Children Under
age 18!**



The First Chapter had their first event last month — a karaoke night! See the front page for more about their next event this month.

BOTY

December BOTY and Jr. BOTY activities are being rescheduled. Stay tuned.

Save the Date for our Shalom Tots Program

Sunday, December 8 - Shalom Tots Celebrate Hanukkah at Temple Beth Or with Elaine Boles, 10:15 - 11:30 AM. This program will include challah baking!

Just a Few Friendly Reminders...

- Please do NOT borrow supplies from the Temple.
- The Temple directory is for personal use of our members only — not for business or commercial use.
- Please do not leave food in the refrigerator.

Thank you for your assistance and cooperation.

“Spotlight on a TBO Family”



Janis Warner and Norm Black

Hello! I am Janis Warner. My husband, Norm Black, and I joined TBO in the fall of 1992 with our (then) two young children. I am currently on the Governing Board and the Social Action Committee. I enjoy both of these obligations mostly because of the other members involved. I love to hike and backpack, but at times it is tough for me to simply put the boots on and go outside! Fortunately, we have a two-year-old puppy that requires me to do just that.

Norm has been on the Finance Committee for decades and is the Temple's Financial Administrator.

We joined TBO 27 years ago when we realized that not being a member of a

Temple during our first High Holy Days in the area didn't feel "right." We visited a few other synagogues but even with old uncomfortable theater style seats, a building that seemed like it might be falling down, no rabbi, and few members, TBO was the friendliest place.

When our family was in a serious car crash, we had every imaginable kind of support from the entire TBO community. It was an unbelievable amount of help.

When our children were young, TBO had annual community Hanukkah parties. I loved having a place to celebrate this Jewish holiday with TBO families, especially when the rest of our friends were gathering for their own winter holiday.

Our favorite Jewish holiday is Passover! We celebrate with a core group of neighboring families, including anyone looking for a place to be. Over the years we have enjoyed seeing how our own Haggadah has changed as our families have grown.

Our Rabbi

*K'hilah/
Mishpachah*

Torah

Avodah

*Tzedakah/
Tikkun Olam*

Leadership

A New Notary Service Our Members May Use!

Our office administrator, Sarah Davis, is now a notary. The office occasionally needs the services of a notary, so we now have our own. Sarah will also be available for notary services for our members during office hours for a donation to the Temple. Just be sure to make an appointment to let her know you are coming. Win-win!

Our Rabbi

K'hilah/

Mishpachah

Torah

Avodah

Tzedakah/

Tikkun

Olam

Leadership

Social Action

We Want You and/or Your Ideas

The Social Action Committee is always seeking new members to keep our discussions and energy fresh. The time commitment is not large as we meet about every other month and put on about two events and sponsor about the same number of speakers a year. As a member of the committee, you can play a meaningful part in making this world a more equitable, peaceful, and better place to live.

If you can't picture yourself on a committee or your busy schedule prevents you from making a commitment to join us, we still want your ideas. If you have an issue or know of an organization doing great work that you think deserves to be brought to the attention of your fellow congregants or have a suggestion for the next *Tzedakah* Box recipient, let us know what it is.

Whether you want to join or offer an idea please contact committee chairperson Naomi Katsh Barger at nkbarger@gmail.com.

Serving Dinner at Interfaith Association of Northwest Washington Family Shelter

If you have been waiting for your chance to prepare and serve dinner at the Interfaith Family Shelter, we are scheduling volunteers for next year starting in January. If you are interested in volunteering please contact Social Action Committee members Nancy Wilkinson at nancy.f.wilkinson@gmail.com or Naomi Katsh Barger at nkbarger@gmail.com.

Volunteers not only prepare the meal but then enjoy the fruits of their efforts by sitting down with the shelter residents to eat the dinner. Dinner is for about 30 people and is served between 5:00-5:30 p.m.



Tzedakah Box Recipient

The local office of the International Rescue Committee (IRC) is the Temple Beth Or *Tzedakah* recipient for the rest of this year. The IRC provides opportunities for refugees, asylum seekers, victims of human trafficking, survivors of torture, and other immigrants to thrive in America. Each year, thousands of people, forced to flee violence and persecution, are welcomed into the United States.

The IRC works with government bodies, civil society actors, and local volunteers to help these "strangers in a strange land" re-establish their lives and become productive members of our society. To learn about the IRC's efforts in Seattle visit their website at <https://www.rescue.org/united-states/seattle-wa>.

Service Schedule For December

Friday, December 6

Family Shabbat

Service

7:00 pm

Led by

Rabbi Kort

Music Leader

Noah Zeichner

Friday, December 13

Evening Shabbat

Service

7:30 pm

Led by

Heidi Piel

Music Leader

Bernie Busch

Saturday,

December 21

Morning Shabbat

Service

10:00 am

Led by

Doug Wallis

Music Leader

Judy Magidson

Friday, December 27

Evening Shabbat and

Hanukkah Service

7:30 pm

Led by

Rabbi Kort

Music Leader

Debbie Massarano



Nominating Committee Report

The Temple Beth Or Nominating Committee (Dan Paquette, Debbie Halliday and Sonia Siegel Vexler) are excited to share the slate of candidates for the 2020 Governing Board. We would like to thank you for your willingness to share your leadership skills, your talents and your time to help Temple Beth Or flourish. Below is a list of people we will be voting on, including some who have completed their one-year term and would like to continue their service.

President-elect	Melanie Field
Secretary	Tina Roth
VP of Finance and Facilities Management	Bob Goodmark
Assistant VP of Finance and Facilities Management	Ken Moses
Member-at-Large	Janis Warner
Member-at-Large	Beth Burstein Fine
Member-at-Large	Deb Henry
Assistant VP of Community Engagement	Wanda Bresnick
VP of Jewish Life	Jennifer Cail
Assistant VP of Jewish Life	David Gross

Our Rabbi
K'hilah/
Mishpachah
Torah
Avodah
Tzedakah/
Tikkun Olam
Leadership

The Nominating Committee would like to thank the following Board Members for remaining on the Board, some of whom have changed their Board positions. Thank you for bringing your passion, intellect, insight, experience and resources to our Jewish community.

Board President	Vicky Romero
VP of Finance and Facilities Management	Robert Goodmark
VP of Community and Engagement	Tim Douglass
Assistant VP of Community and Engagement	Wanda Bresnick
Member-at-Large	Janis Warner
Assistant VP of Jewish Life	David Gross
Member-at-large	Beth Burstein Fine

The Nominating Committee would like to thank the following people, who will be leaving the Board. Your willingness to serve on the Board is truly appreciated. We value the time you gave and your wisdom that you shared at meetings and beyond.

Past President	Mark Bresnick
Secretary	JonaRose Feinberg
VP of Finance and Facilities Management	Steve Center
Assistant VP of Finance and Facilities Management	Robyn Klarman
VP of Jewish Life	Heidi Piel

Sonia Siegel Vexler
Nominating Committee Chair

Our Rabbi

K'hilah/

Mishpachah

Torah

Avodah

Tzedakah/

Tikkun Olam

Leadership

Temple Beth Or Slate of Candidates



Wanda Bresnick, Assistant VP of Community Engagement

My husband Mark, our children, Zach and Kelsey, and I joined Temple Beth Or in 1996 because it was warm and welcoming to our interfaith family. Many years later I made the decision to convert. Over the years I have served on the HHD Committee and the Rabbinic Search Committee. Currently, I am on the Membership Committee. Earlier this year I joined the Board as an assistant VP of Membership. I look forward to continuing in that role to help TBO thrive. I am a family therapist in private practice.



Beth Burnstein, Member at Large

I first came to Beth Or in the early '90s when my spouse, David, became the Rabbi. I loved the warm, homey community and made many close friends. A couple of years ago we rejoined Beth Or, again drawn to the welcoming community and meaningful services. I spent my career working in Jewish day schools and am happy to use my experiences to support the Religious School and to reconstitute the Youth Education Committee under Amy Paquette and Jessica Hill's leadership. I am honored to serve TBO as a Board member.



Jennifer Cail, VP of Jewish Life

I have been a member at Temple Beth Or since 2015 and have three children in Religious School. I homeschool my children and have been looking for a way to be more involved with TBO.



Melanie Field, President Elect

My family, Vinaya, Sunita (27), and Sanjay (24), and I joined TBO approximately 25 years ago. I have served in a number of roles during that time, most notably as Vice President, Chair of the Fundraising Committee, twice on Rabbinic Search Committees, Chair of HHD Committee for nearly a decade, member of Bereavement Committee for over 2 decades and most recently as chair of the By Laws Task Force. It seemed like a good time to step-up. I am a retired environmental engineer and now serve as a "professional volunteer" in various ways.



Bob Goodmark, VP of Finance and Facilities Management

I was born in Florida and am a graduate of the University of Florida and the University of Houston. I am a chemical engineer and retired from Shell Oil Company. My wife, Michele, and I moved from Houston to Mill Creek in 2013 to be close to our son and daughter-in-law. We joined TBO in 2013 and have been active members since joining. I joined the Finance Committee shortly after joining TBO and was elected VP of Finance in 2015 and Asst. VP of Finance in 2019.

Temple Beth Or Slate of Candidates

Our Rabbi

*K'hilah/
Mishpachah*

Torah

Avodah

*Tzedakah/
Tikkun Olam*

Leadership



David Gross, Assistant VP of Jewish Life

I was a veterinarian and held leadership positions at different universities. After retirement, my wife, Rosalie, and I moved here to be close to our oldest son and his family. Since retirement, I have written and published a number of books. Visit my web site at docdavesvoice.com to learn more about me. Rosalie and I joined TBO in 2007 and both served on the Social Action Committee. I lost Rosalie to lung cancer in 2013 after 53 years of marriage. The community that is Beth Or stepped up to comfort and support me after Rosalie's death and I want to continue to give back and help the community succeed and grow.



Deb Henry, Member at Large

My daughter, Victoria (21), and I have been TBO members since 2001. I've been active for many years on the Membership Committee, support the Mitzvah Corps, sang in past Purimspiels, and previously served 3 years on the Governing Board. I still work full time and volunteer by sharing Temple events and news on our public Facebook page and in the TBO Members FB group. The past few years I've missed having a close connection to our community, and I'm looking forward to re-engaging and contributing as a Member-at-Large Board member.



Ken Moses, Assistant VP of Finance and Facilities Management

My family and I joined Temple Beth Or in 2018. We were looking for a sense of community and found it at Temple Beth Or. Rabbi Kort was our rabbi in Southern California so it felt natural. I wanted to find a way to give back and at the same time support and grow the Temple and felt the best way to do that was to join the Board. I am currently Chief People Officer for a national environmental company and have board experience. My wife, Kelley, and I live in Bothell along with our son, Mitch, who will become bar mitzvah in 2020. I have two grown daughters living in California.



Tina Roth, Secretary

My husband, Roland, and I joined the Temple in 2014 after moving here from Florida while pregnant with our son, Daniel. I have served on many committees/boards before moving to the Everett area and becoming a parent. I feel now is the time to become more involved by giving back to a place that I want to see thrive as our son grows up with the Temple Beth Or family. I am an administrative assistant for Everett Public Schools.



Janis Warner, Member at Large

My husband, Norm Black, and I have been Temple members since 1992. We have two grown children, Cecelia and Lester, who became b'nai mitzvah at TBO. I have served as the President, as well as the chairperson for the Events, Social Action, Fundraising, and Scrip Committees, and taught the Tots class at Religious School for several years. I am currently a member of the Governing Board, I enjoy meeting the newer, younger families as well as participating in Next Chapter with older members. I also enjoy outdoor activities such as hiking and camping, and my latest passion is puppy, Clyde.

Our Rabbi

K'hilah/

Mishpachah

Torah

Avodah

Tzedakah/

Tikkun Olam

Leadership

Leadership Nus

Nus from the Governing Board

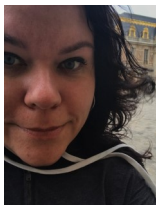
At the November Governing Board meeting the following business occurred and information was shared:

1. The food policy was discussed, along with several options. A sub-committee will consider all comments, look at all options and come up with a recommendation.
2. The Board approved a policy to not allow nominations from the floor for Board position elections. Opportunities will be available to nominate or self-nominate prior to the election. However candidates must be qualified prior to election to prevent unfortunate embarrassment.
3. The Finance Committee will track insurance costs related to the duplex in a separate fund.
4. \$8K in Religious School scholarships have been approved this year.
5. A task force has been created to look at the sanctuary window concerns.
6. There was a discussion about how to handle security concerns.

Opt-Out

Reminder: Opt-Out Forms are available in the Temple office for those who chose not to have their or their children's photos published.

Our Office Administrator, AKA Office Maven, AKA Sarah, will periodically contribute to the *ORacle*. Her first column is below.



Sarah's Schtick

Thank you all so much for such a warm welcome over the past couple of months. It is such a pleasure for me to be of service to this community. I wanted to share a favorite recipe we use for Hanukkah and Turkey Day 2.0 (our Thanksgiving party for friends in December).

Chag Hanukkah Sameach! Enjoy!

Oven Roasted Pecans

Ingredients

- 1 pound (456 grams) of pecan halves
- 1/2 stick of salted butter or margarine
- 1 Tbs salt
- 1 tsp thyme

Directions

Pre-heat the oven to 300 degrees. Melt the butter and combine with salt and thyme. Toss butter mixture with pecans, coating thoroughly. Place on cookie sheet with a raised edge. Bake at 300 degrees for 45 minutes for a less dark result or for 1 hour for very dark almost burned pecans. Stir pecans every 15 minutes to allow them to roast evenly. Drain pecans on paper towels or paper bag.

Temple Leadership

Rabbi

Rachel Kort

Governing Board

President

Vicky Romero

VP of Finance & Facilities
Management

Steve Center

VP of Community &
Engagement

Tim Douglass

VP of Jewish Life

Heidi Piel

Assist. VP's of Finance ...

Bob Goodmark
Robyn Klarman

Assist. VP's of Community...

Janis Warner
Wanda Bresnick

Assist. VP's of Jewish Life

Beth Burstein Fine
David Gross

Board Secretary

JonaRose Feinberg

Immediate Past President

Mark Bresnick

Committees

Adult Education

Heidi Piel

Bereavement

Susan Cross

Calendar

Janis Warner

Communications

Al Friedman

Financial Administrator

Norm Black

High Holy Days

Carolyn Henri

Mitzvah Corps

Vicki Schwartz

Next Chapter

Sonia Siegel Vexler

ORacle

Vicky Romero

ORbits

Lori Wolff

Religious Practices

Phyllis Busch

Social Action

Naomi Katsh

Staff

Religious School Principal

Amy Paquette

Office Administrator

Sarah Davis

December 2019

Kislev — Tevet 5780

Sun	Mon	Tue	Wed	Thu	Fri	Sat
1 Annual Board Photo 9:00am in the sanctuary Governing Board Mtg. 10:15am-12:00pm at the PUD	2	3	4	5	6 Family Shabbat Service 7:00pm	7 Social Action Committee Mtg. 3:15pm in the <i>Oneg</i> room General Membership Meeting 4:30-6:30pm in the sanctuary
8 Religious School Shalom Tots Program 10:15am	9 Membership Committee Mtg 4:30pm Finance Committee Mtg. TBO Oneg Rm. 6:30-8:30pm	10	11	12	13 Evening Shabbat Service 7:30pm	14
15 Religious School YEC Mtg 10am	16	17	18 <i>Atidaynu</i> 5:30 dinner 6-9:00pm class <i>(invitation only)</i>	19	20	21 Morning Shabbat Service 10:00am
22 Hanukkah, One candle	23 Hanukkah, Two candles	24 Hanukkah, Three candles	25 Hanukkah, Four candles	26 Hanukkah, Five candles	27 Hanukkah, Six candles Bat Mitzvah Review meeting 10:00am Religious School Reunion 6:00pm Evening Shabbat and Hanukkah Service 7:30pm	28 Hanukkah, Seven candles First Chapter <i>Chavurah</i> Hanukkah Celebration 6:00pm
29 Hanukkah, Eight candles	30	31	Happy New Year!			



Temple Beth Or
3215 Lombard Ave
Everett, WA 98201
425-259-7125

Return Service Requested

Temple Beth Or Mission Statement

Temple Beth Or is a warm, compassionate, vibrant, spirited, inclusive, and participatory Reform Jewish community.

We are religiously and geographically diverse,
serving the northern Puget Sound region of Washington State.

As God's covenantal partners in fulfilling mitzvot, our priorities are:

- ***K'hilah*** (community)/***Mishpachah*** (family) — nurturing our interactive, multigenerational extended family;
- ***Torah*** — lifelong learning, searching for meaning, and seeking comfort and healing;
 - ***Avodah*** — worship and celebration through the observance of meaningful, creative, and traditional rituals;
- ***Tikkun Olam*** — transforming ourselves and our world through *tzedakah* (fairness), social justice, and *g'milut chasadim* (acts of loving kindness).